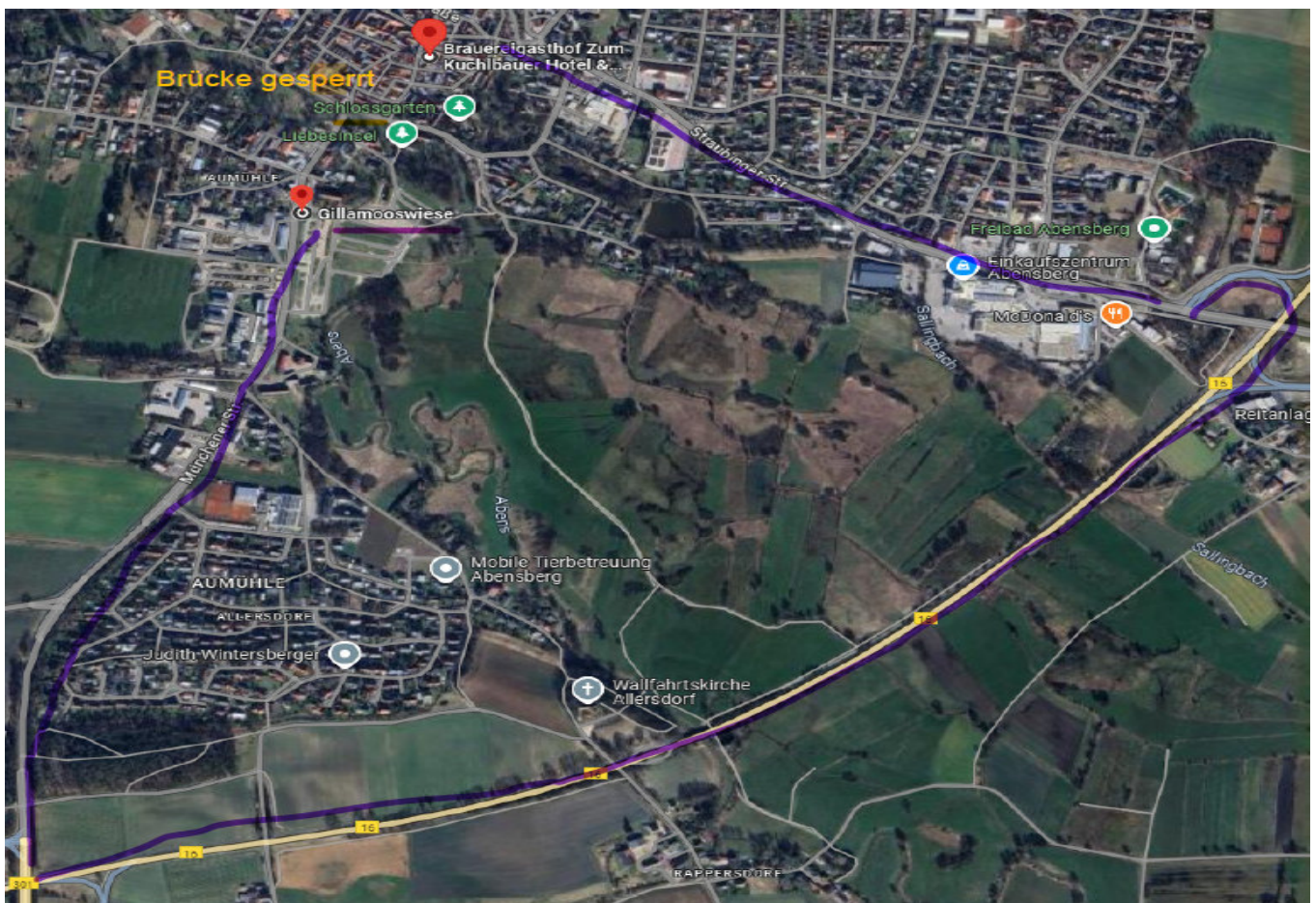


Attention! Important information regarding Directions via Gillamooswiese:

Attention diversion

The construction work for the renewal of the Abens-Bridge will begin **on 04.09.2024 and is expected to last until 03.09.2025**. During this period, the city centre cannot be accessed via Münchener Straße. The diversion will take place via the B16.

The parking lot on the Gillamooswiese is still available, the city center can be reached on foot over the bridges of the Love Island or the bridge on Mayrstraße. This newly built bridge is barrier-free. It is open to pedestrians, wheelchair users, cyclists, etc., as well as to the rescue services and the fire brigade.



Info about parking:

Our perfect location in the middle of the town square of Abensberg has the disadvantage, that we cannot offer on-site parking.

For loading and unloading, use our main entrance at Stadtplatz 2. After that, we recommend the free large car park "Gillamooswiese" (address for the navigation system: Münchener Str. 23). We can be reached on foot from there in a few minutes.

Attention! The entire city is a 2-hour parking zone with a parking disc!